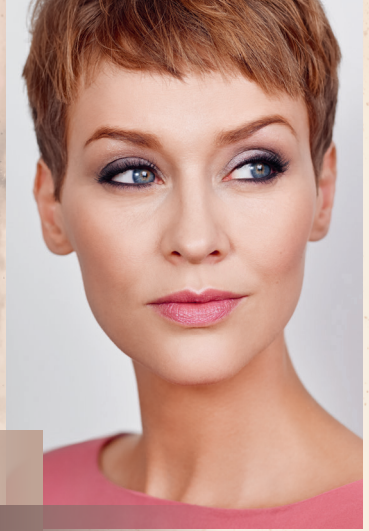


Dr. Hauschka



Mysterious Eyes

We used the following products for Verena's make-up:



Complexion



Compact Powder



Foundation



Concealer



Blush Duo 02

Eyes



Eye & Brow Palette



Eye Definer 05



Volume Mascara 01



Eyeshadow 03

Lips



Sheer Lipstick 02

Mysterious Eyes

Intense, expressive and secretive.

Your step-by-step to a look that highlights the eyes.

Prepare your complexion with the appropriate **Foundation** for your skin tone. Use **Concealer** if necessary then set with **Compact Powder**. For long-lasting results, apply Compact Powder both before and after the Foundation. Accentuate the eyebrows with shades from the **Eye & Brow Palette**.

1.

Apply the light shade from the **Eye & Brow Palette** to the entire eyelid as a base colour.

2.

Emphasise the inner and outer parts of the upper and lower eyelid edges with **Eye Definer 05 Taupe**, smudging the line on the upper lid edge to the crease.

3.

Use the darkest shade from the **Eye & Brow Palette** to accentuate the upper corner of the eye, blending the transition inwards.

4.

Apply the second lightest shade from the **Eye & Brow Palette** to the outer, lower corner of the eye, again blending the colour inwards.

5.

Apply the second darkest shade from the **Eye & Brow Palette** to the centre of the eyelid.

6.

Apply **Volume Mascara 01 Black** to the upper and lower lashes.

7.

For a fresh, vibrant look, apply **Eyeshadow 03 Rubellite** below the eyebrow arch.

8.

Combine the two shades of **Blush Duo 02 Dewy Peach** and apply to the outer cheekbones.

9.

Dab on **Sheer Lipstick 02 Rosanna** as a colourful contrast to the intense eyes.

